



Partial Reopening of Phase # 1 (Northbound Only), and Closure of Sterling Drive at Franjo Road Intersection.

Temporary Traffic Pattern

Phase 1 – August 2024 Thru February 2025

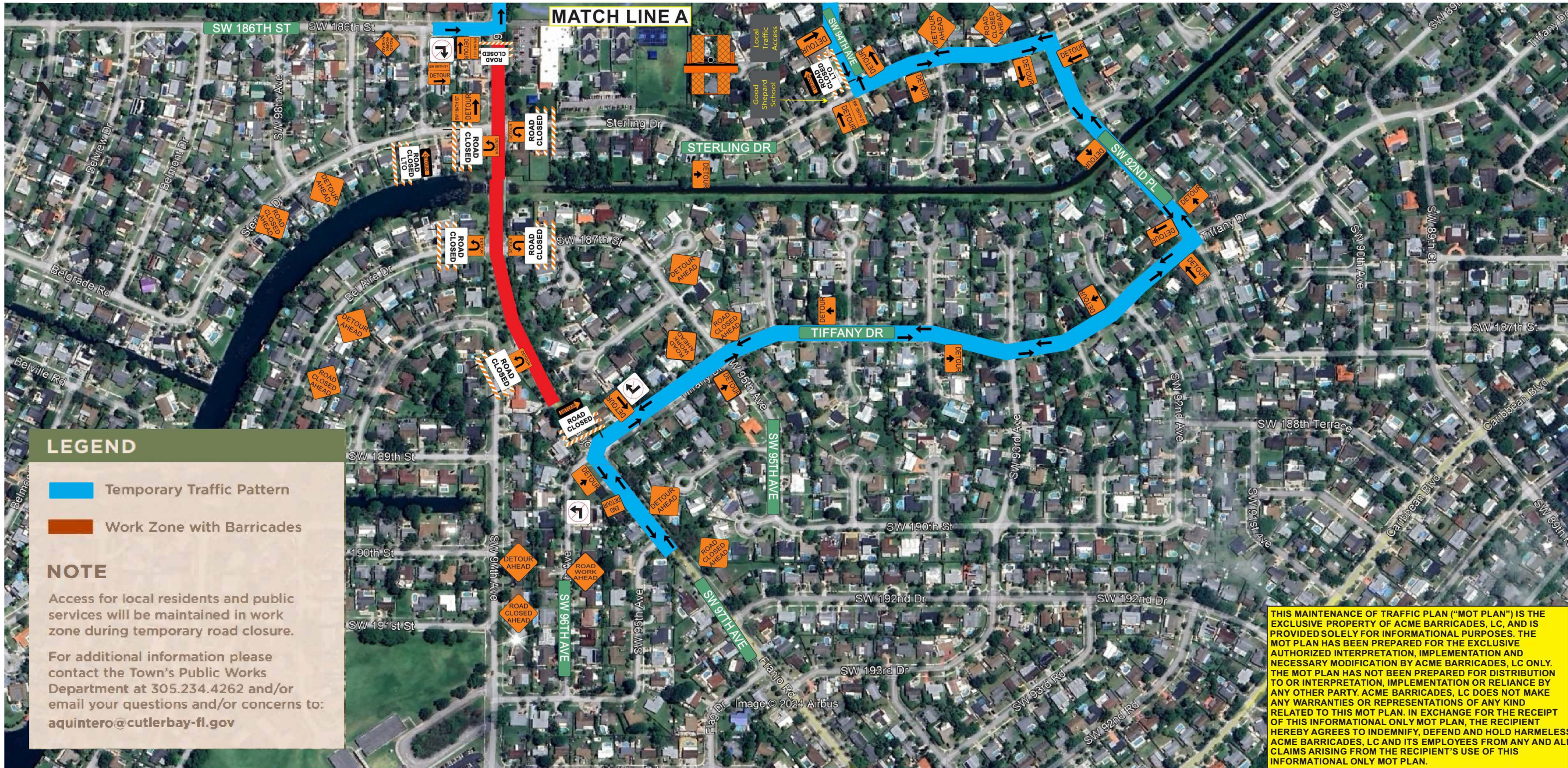
Phase 2 – October 2024 Thru April 2025

Sterling Drive Intersection Closure – January 2025 Thru February 2025



Franjo Road Roadway Improvement Project

Work Zone Limits: SW 184th Street to Tiffany Drive



LEGEND

- Temporary Traffic Pattern
- Work Zone with Barricades

NOTE

Access for local residents and public services will be maintained in work zone during temporary road closure.

For additional information please contact the Town's Public Works Department at 305.234.4262 and/or email your questions and/or concerns to: aquintero@cutlerbay-fl.gov

THIS MAINTENANCE OF TRAFFIC PLAN ("MOT PLAN") IS THE EXCLUSIVE PROPERTY OF ACME BARRICADES, LC, AND IS PROVIDED SOLELY FOR INFORMATIONAL PURPOSES. THE MOT PLAN HAS BEEN PREPARED FOR THE EXCLUSIVE AUTHORIZED INTERPRETATION, IMPLEMENTATION AND NECESSARY MODIFICATION BY ACME BARRICADES, LC ONLY. THE MOT PLAN HAS NOT BEEN PREPARED FOR DISTRIBUTION TO OR INTERPRETATION, IMPLEMENTATION OR RELIANCE BY ANY OTHER PARTY. ACME BARRICADES, LC DOES NOT MAKE ANY WARRANTIES OR REPRESENTATIONS OF ANY KIND RELATED TO THIS MOT PLAN. IN EXCHANGE FOR THE RECEIPT OF THIS INFORMATIONAL ONLY MOT PLAN, THE RECIPIENT HEREBY AGREES TO INDEMNIFY, DEFEND AND HOLD HARMLESS ACME BARRICADES, LC AND ITS EMPLOYEES FROM ANY AND ALL CLAIMS ARISING FROM THE RECIPIENT'S USE OF THIS INFORMATIONAL ONLY MOT PLAN.

Partial Reopening of Phase # 1 (Northbound Only), and Closure of Sterling Drive at Franjo Road Intersection.

Temporary Traffic Pattern

Phase 1 – August 2024 Thru February 2025

Phase 2 – October 2024 Thru April 2025

Sterling Drive Intersection Closure – January 2025 Thru February 2025



Franjo Road Roadway Improvement Project

Work Zone Limits: SW 184th Street to Tiffany Drive