



## **NOTICE OF ROADWAY RESURFACING PROJECT WITHIN CUTLER RIDGE PINES, MARK MANOR PINES, AND WHISPERING PINES ESTATES**

Residents within portion of Cutler Ridge Pines, Mark Manor Pines, and Whispering Pines Estates will soon see improvements to the roadways in their neighborhood. Some of the Town's residential roadways have not been repaved in many years, and exhibit a high degree of pavement distress. As a result, the Town's Consulting Engineer completed a Town-wide Sidewalk and Roadway Assessment report. Roadways in your neighborhood have been identified to be in "poor" condition, and were selected by Town's staff to be part of the Town's PTP Phase IV Roadway Resurfacing Project. Funding for the project is being provided by the Town's portion of the People's Transportation Plan (PTP) Municipal allocation (1/2 Penny Transit Surtax proceeds).

The Roadway resurfacing improvements will enhance your neighborhood, and improve drivability. Project will include milling of existing asphalt, placement of 3/4" Type S-III Asphalt Concrete Surface Course, adjustment of valve boxes and manholes, installation of raised pavement markers, and placement of 24" thermoplastic stop bars with double yellow striping.

Construction is scheduled to commence in the last week of July 2016, and will be tentatively completed in approximately 6 weeks. Access to local roads will be maintained during construction however, traffic patterns in the area may be altered as the project progresses.


**For more information contact:**

Alfredo Quintero Jr.

Acting Public Works Director

(305) 234-4262

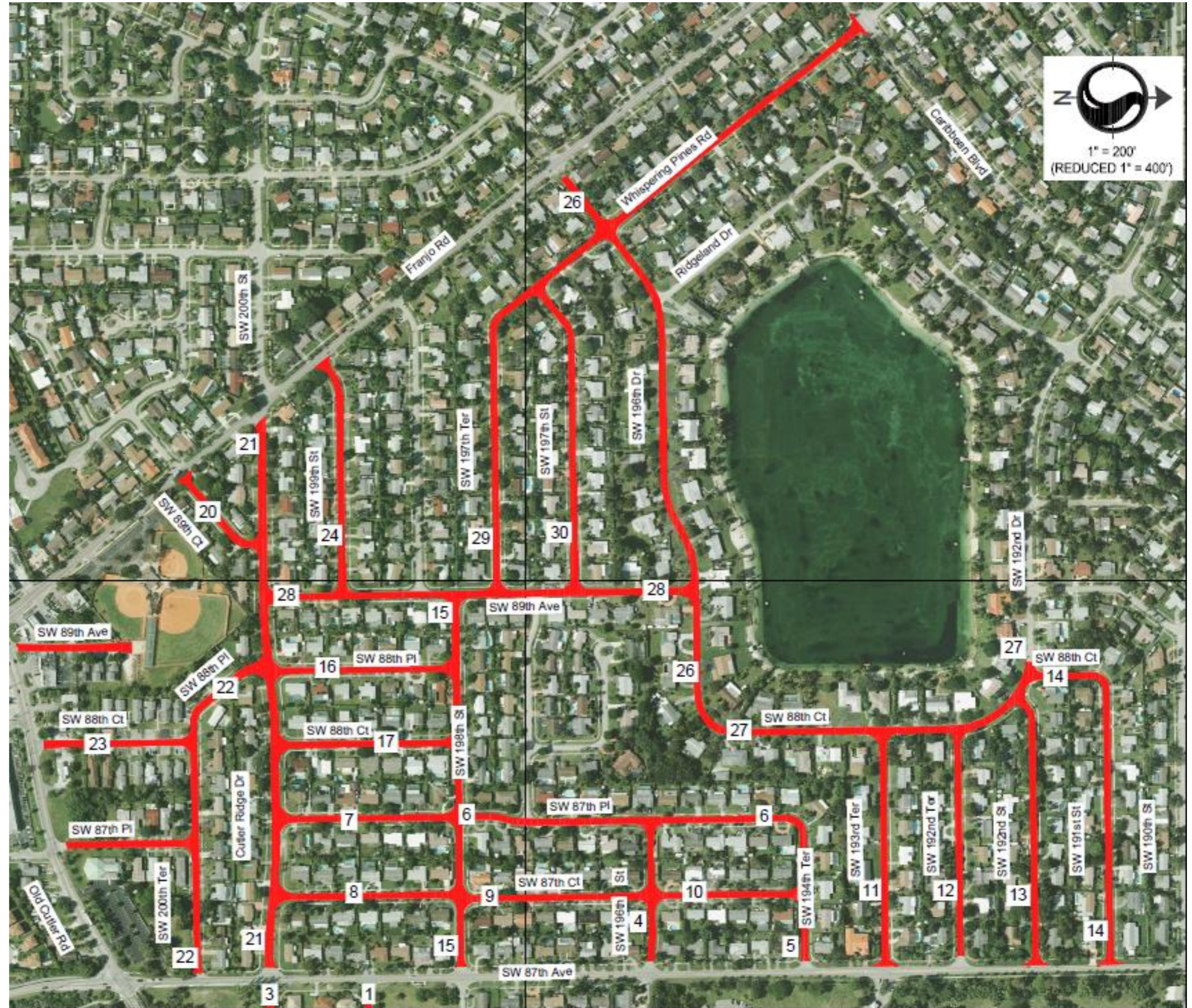


Please see back for  
Construction   
**INFORMATION**



**LEGEND**

- 1- SW 199<sup>TH</sup> ST (EAST OF 87<sup>TH</sup> AVE)
- 2- SW 85<sup>TH</sup> AVE (FROM 199<sup>TH</sup> ST TO OCR)
- 3- SW 200<sup>TH</sup> ST (EAST OF 87<sup>TH</sup> AVE)
- 4- SW 196<sup>TH</sup> ST (WEST OF 87<sup>TH</sup> AVE)
- 5- SW 194<sup>TH</sup> TER (WEST OF 87<sup>TH</sup> AVE)
- 6- SW 87<sup>TH</sup> PL (FROM 194<sup>TH</sup> TER)
- 7- SW 87<sup>TH</sup> PL (SOUTH OF 198<sup>TH</sup> ST)
- 8- SW 87<sup>TH</sup> CT (FROM CUTLERRIDGE TO 198<sup>TH</sup> ST)
- 9- SW 87<sup>TH</sup> CT (FROM 198<sup>TH</sup> ST TO 196<sup>TH</sup> ST)
- 10- SW 87<sup>TH</sup> CT (NORTH OF 196<sup>TH</sup> ST)
- 11- SW 193<sup>RD</sup> TER
- 12- SW 192<sup>ND</sup> TER
- 13- SW 192<sup>ND</sup> ST
- 14- SW 191<sup>ST</sup> ST & SW 88<sup>TH</sup> CT
- 15- SW 198<sup>TH</sup> ST (FROM SW87TH AVE TO 89<sup>TH</sup> AVE)
- 16- SW 88<sup>TH</sup> PL
- 17- SW 88<sup>TH</sup> CT
- 18- SW 197<sup>TH</sup> TER
- 19- SW 88<sup>TH</sup> CT (AND SW 196<sup>TH</sup> TER)
- 20- SW 89<sup>TH</sup> CT (FROM FRANJO RD TO CUTLER RIDGE DR)
- 21- SW 200<sup>TH</sup> ST (FROM FRANJO RD TO 87<sup>TH</sup> AVE)
- 22- SW 200<sup>TH</sup> TER AND 88<sup>TH</sup> PL (FROM 87<sup>TH</sup> AVE)
- 23- SW 88<sup>TH</sup> CT (FROM 200<sup>TH</sup> TER TO OCR)
- 24- SW 199<sup>TH</sup> ST
- 26- SW 196<sup>TH</sup> DR (FROM FRANJO RD TO 88<sup>TH</sup> CT)
- 27- SW 88<sup>TH</sup> CT
- 28- SW 89<sup>TH</sup> AVE
- 29- SW 197<sup>TH</sup> TER (FROM 196<sup>TH</sup> DR TO 89<sup>TH</sup> AVE)
- 30- SW 197<sup>TH</sup> ST (FROM 197<sup>TH</sup> TER TO 89<sup>TH</sup> AVE)



# ROADWAY RESURFACING PLAN PHASE IV